

**\$ Millions**

**% of AUM**

Asset Classes	AUM (M)	1 Week	1 Month	YTD	1 Year	◀ 10 Week Trend (\$)	1 Week	1 Month	YTD	1 Year
Fixed Income	685,419	1,987	2,317	40,789	97,021		0.3%	0%	6%	14%
Commodities	62,703	(34)	(1,493)	(2,908)	(5,844)		-0.1%	-2%	-5%	-9%
Alternatives	5,148	(248)	(373)	1,314	1,738		-4.8%	-7%	26%	34%
Equity	2,859,124	(3,406)	(13,886)	17,793	121,628		-0.1%	0%	1%	4%
Asset Class by Region / Type	AUM (M)	1 Week	1 Month	YTD	1 Year	◀ 10 Week Trend (\$)	1 Week	1 Month	YTD	1 Year
<b>Equity - Global</b>	149,954	280	855	(1,225)	11,488		0.2%	1%	-1%	8%
<b>Equity - Developed</b>										
Broad Market Developed	269,997	288	2,068	278	11,031		0.1%	1%	0%	4%
North America	14,783	65	133	1,212	(255)		0.4%	1%	8%	-2%
Europe	60,980	(79)	(550)	(1,104)	(18,408)		-0.1%	-1%	-2%	-30%
U.S.	2,094,111	(616)	(12,789)	9,951	108,037		0.0%	-1%	0%	5%
<b>Equity - Emerging</b>										
Frontier Markets	560	(4)	1	3	(126)		-0.8%	0%	0%	-23%
MENA	1,457	(63)	77	409	466		-4.3%	5%	28%	32%
LatAm	11,415	(177)	(182)	689	472		-1.5%	-2%	6%	4%
China	17,814	(571)	(842)	1,848	5,907		-3.2%	-5%	10%	33%
Asia-Pacific	48,238	(1,080)	(1,980)	(5,338)	(11,029)		-2.2%	-4%	-11%	-23%
Broad Market Emerging	175,715	(1,529)	(1,033)	11,794	13,127		-0.9%	-1%	7%	7%
<b>Fixed Income - by Region</b>										
U.S.	619,595	2,535	3,058	35,866	89,065		0.4%	0%	6%	14%
Global	42,707	293	1,038	5,581	6,760		0.7%	2%	13%	16%
Developed Markets	1,361	0	(22)	(40)	(357)		0.0%	-2%	-3%	-26%
Emerging Markets	21,261	(837)	(1,759)	(545)	1,731		-3.9%	-8%	-3%	8%
<b>Fixed Income - by Type</b>										
Broad Market	217,098	1,397	1,873	2,403	24,636		0.6%	1%	1%	11%
Gov't	249,563	629	1,400	15,702	58,886		0.3%	1%	6%	24%
Corporate	218,263	(35)	(958)	22,758	13,677		0.0%	0%	10%	6%
<b>Commodities</b>										
Energy	2,541	35	23	(504)	(537)		1.4%	1%	-20%	-21%
Agriculture	769	3	13	25	(125)		0.4%	2%	3%	-16%
Industrial Metals	205	(2)	(6)	(7)	(130)		-1.2%	-3%	-3%	-63%
Precious Metals	50,798	(14)	(1,337)	(1,509)	(4,941)		0.0%	-3%	-3%	-10%
Broad Market	6,799	(40)	(149)	(857)	(1,070)		-0.6%	-2%	-13%	-16%
<b>Inverse</b>										
Fixed Income	299	(1)	(13)	(103)	(215)		-0.3%	-4%	-34%	-72%
Commodities	382	(13)	(53)	(18)	319		-3.4%	-14%	-5%	84%
Equity	1,919	(67)	(230)	835	(156)		-3.5%	-12%	44%	-8%
<b>Leveraged</b>										
Equity	12,182	147	586	(1,558)	1,074		1.2%	5%	-13%	9%
Fixed Income	197	(2)	16	29	37		-1.3%	8%	15%	19%
Commodities	1,208	(3)	15	(39)	640		-0.2%	1%	-3%	53%

Factors	AUM (M)
Low Volatility	47,870
Dividends	132,167
Value	183,423
Growth	190,454
Quality	18,527
Momentum	12,033

1 Week	1 Month	YTD	1 Year	◀ 10 Week Trend (\$)
952	1,834	8,303	14,886	
627	1,616	3,805	16,274	
283	(805)	(4,648)	18,121	
164	996	680	8,756	
77	187	3,212	5,961	
7	(174)	(598)	(204)	

1 Week	1 Month	YTD	1 Year
2.0%	4%	17%	31%
0.5%	1%	3%	12%
0.2%	0%	-3%	10%
0.1%	1%	0%	5%
0.4%	1%	17%	32%
0.1%	-1%	-5%	-2%

Size	AUM (M)
Small	184,617
Mid	184,155
Micro	1,030
Large	1,005,962

1 Week	1 Month	YTD	1 Year	◀ 10 Week Trend (\$)
349	(321)	(2,478)	12,621	
172	308	3,811	12,577	
(9)	(14)	(84)	36	
(1,100)	(14,734)	(1,789)	45,249	

1 Week	1 Month	YTD	1 Year
0.2%	0%	-1%	7%
0.1%	0%	2%	7%
-0.9%	-1%	-8%	3%
-0.1%	-1%	0%	4%

Sectors	AUM (M)
Consumer Non-cyclicals	18,577
Semiconductors	2,071
Utilities	16,806
Health Care	38,309
Retail	294
Oil & Gas	2,633
Metals & Mining	384
Biotech	14,803
Mortgage REITs	1,260
Construction & Engineering	118
Food	73
Leisure & Recreation	63
Natural Gas	95
Media & Publishing	97
Homebuilding	1,982
Insurance	1,002
Pharmaceuticals	1,178
Transportation	737
Banks	6,092
Consumer Cyclicals	18,865
Aerospace & Defense	7,350
Internet	9,702
Software	3,684
MLPs	17,853
Real Estate	49,232
Basic Materials	6,205
Technology	56,420
Industrials	15,645
Telecom	8,398
Financials	38,002
Energy	17,495

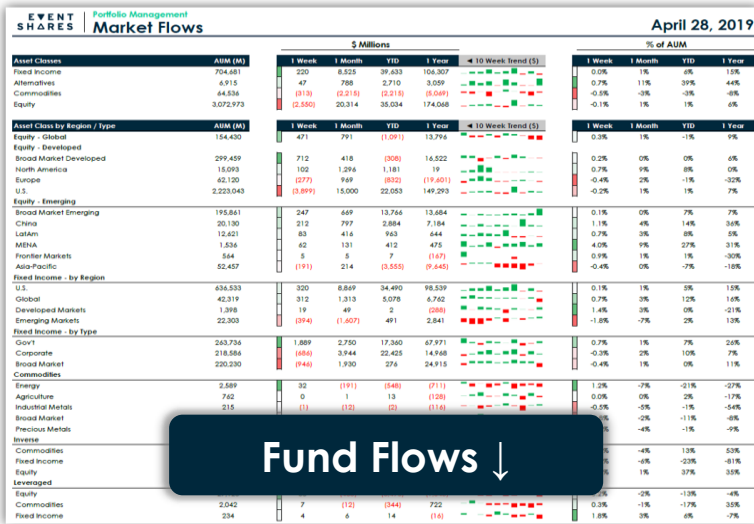
1 Week	1 Month	YTD	1 Year	◀ 10 Week Trend (\$)
368	(244)	894	3,889	
356	379	280	(417)	
288	1,936	1,761	3,995	
166	(672)	(1,095)	6,247	
59	(68)	(263)	(108)	
20	(215)	(613)	(326)	
10	(33)	(89)	(343)	
9	216	(310)	(306)	
4	7	28	243	
0	(1)	(26)	(148)	
0	0	(5)	(8)	
0	(2)	(59)	(35)	
0	(1)	(5)	(19)	
(2)	14	30	40	
(2)	(116)	263	(105)	
(7)	51	38	(42)	
(8)	(22)	(142)	(191)	
(10)	(10)	(106)	(294)	
(24)	(499)	(2,379)	(5,846)	
(31)	726	108	(419)	
(34)	(156)	(376)	(1,333)	
(71)	96	369	391	
(91)	109	1,008	1,196	
(96)	(139)	(171)	25	
(155)	(1,485)	1,009	1,199	
(181)	(698)	(888)	(2,012)	
(211)	829	(1,431)	(5,204)	
(382)	(455)	(2,129)	(4,362)	
(481)	(243)	2,665	1,273	
(530)	(466)	(1,454)	(8,819)	
(644)	(1,239)	(3,043)	(4,339)	

1 Week	1 Month	YTD	1 Year
2.0%	-1%	5%	21%
17.2%	18%	14%	-20%
1.7%	12%	10%	24%
0.4%	-2%	-3%	16%
20.0%	-23%	-89%	-37%
0.8%	-8%	-23%	-12%
2.6%	-9%	-23%	-89%
0.1%	1%	-2%	-2%
0.3%	1%	2%	19%
0.0%	-1%	-22%	-126%
0.0%	0%	-7%	-11%
0.0%	-4%	-94%	-55%
0.0%	-1%	-5%	-20%
-1.7%	14%	31%	41%
-0.1%	-6%	13%	-5%
-0.7%	5%	4%	-4%
-0.7%	-2%	-12%	-16%
-1.3%	-1%	-14%	-40%
-0.4%	-8%	-39%	-96%
-0.2%	4%	1%	-2%
-0.5%	-2%	-5%	-18%
-0.7%	1%	4%	4%
-2.5%	3%	27%	32%
-0.5%	-1%	-1%	0%
-0.3%	-3%	2%	2%
-2.9%	-11%	-14%	-32%
-0.4%	1%	-3%	-9%
-2.4%	-3%	-14%	-28%
-5.7%	-3%	32%	15%
-1.4%	-1%	-4%	-23%
-3.7%	-7%	-17%	-25%



Visit EventShares.com/Library for more research

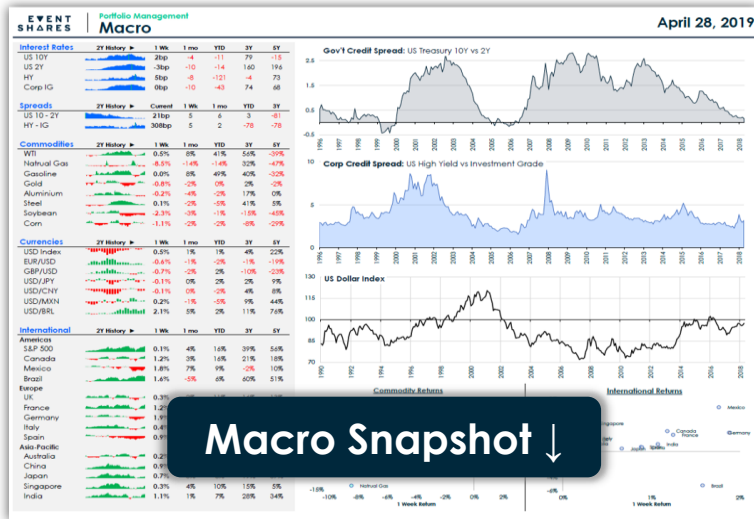
Subscribe



Fund Flows ↓



Factors ↓



Macro Snapshot ↓



Sectors Views ↓



# Want More?

This research is a byproduct of our institutional investment to analysis.

To learn more about our active ETF by clicking the link below.

[Active ETF](#)

**About EventShares**  
EventShares is an investment management firm dedicated to translating legislation and regulation coming out of Washington D.C. into real world investment solutions. The firm's goal is to provide its clients with attractive, long-term results by following a disciplined and differentiated approach to investing. Additional information at [www.EventShares.com](http://www.EventShares.com).



**Important Information** © Active Weighting Advisors LLC ("AWA") is an SEC-registered investment adviser that manages ETFs under the brand name EventShares Funds. The opinions expressed herein are those of AWA as of the published date and are subject to change. It is provided as general market commentary only, and it does not consider the specific investment objectives, financial situation or particular needs of any one client. The comments may not be relied upon as recommendations, investment advice or an indication of trading intent. AWA is not soliciting any action based on this document. Investors should consult with their own financial adviser before making any investment decisions. There is no guarantee that any future event discussed herein will come to pass. The information herein was obtained from various sources, which we believe to be reliable, but we do not guarantee its accuracy or completeness. The policy themes and baskets mentioned herein are unmanaged and are not available for direct investment. Returns assume no management, transaction or other expenses and no reinvestment of dividends, interest and/or capital gains. **Past performance does not guarantee or indicate future results.** Investing involves risk, including the possible loss of principal and fluctuation of value. AWA disclaims responsibility for updating information. In addition, AWA disclaims responsibility for third-party content, including information accessed through hyperlinks.